

Spring 2001

HOTLINE

The Newsletter of the West Laurel Civic Association

SPRING MEETING — MAY 17, 2001 AT 7:30 PM

WEST LAUREL COMMUNITY BUILDING

Meeting Topic: Old Gunpowder Community Golf Course Development Plan

DEVELOPMENT IS PAR FOR THE COURSE

Greetings from the West Laurel Civic Association's Board of Directors! We have been working diligently on a host of issues both old and new. We bring our activities and high interest issues to you in this newsletter and at our general meetings. We are often on the leading edge of community issues, breaking news before it's in the newspapers, so we feel it's well worth your time to read this newsletter and attend our general meeting. All are welcome!

Our May 2001 meeting will feature a plan, recently filed with Maryland National Capital Parks & Planning Commission (M-NCPPC), to develop the Gunpowder Golf Course into a championship golf course community with over 600 homes. The main entrance appears to be on Route 198 across from Riding Stable Road!

This proposal plans to develop on and around the current Old Gunpowder Course (located less than one mile south of West Laurel). Some residents don't want to lose an "affordable" golf course while others may welcome the planned larger "championship" course. Either way, this development project has the potential to impact West Laurel and surrounding areas in many ways.

The WLCA received the golf course development plan as this newsletter went to print. Consequently, full details of the plan were not included here. However, there are issues that have been studied in

previous plans that may still be relevant including, the potential loss of equestrian trails, a land swap between the developer and M-NCPPC, construction of hundreds of new homes in Prince George's and Montgomery counties, and impact on our local schools, and added traffic congestion on Route 198, Riding Stable Road, and Old Gunpowder Road — which are both very narrow, old, and already busy rural roads).

This development plan has been studied and talked about for nearly seven years but is now moving forward on a fast track. The property owner and a new developer recently submitted plans to M-NCPPC in Prince George's County, but are holding back the plans for the majority of the development in Montgomery County. The timing of the plan came as a surprise to many, as the official word was that the plan was not expected to be submitted until this summer of 2001. The WLCA and the Gunpowder Citizens Association have been trying to follow this project over the years, however, the property owner has kept us in the dark until last week. Now community groups are responding quickly to prepare for the June 14 public hearing.

Continued on page 4



CONTENTS

General Meeting Topics	1/4
Community Issues	2/3/4
Environmental Issues	5/6

Board Elections	7
Community Groups	8
Useful Numbers	9

Next Meeting — May 17, 2001

COMMUNITY ISSUES

CONTEE ROAD INTERCHANGE BEING STUDIED

As part of the 1990 Master Plan for northern Prince George's County, a new interchange was proposed on I-95 south of Route 198 (approximately where the Van Dusen Road bridge is now). The ICC may one day connect just south of this interchange.

Tom Dernoga represented WLCA in studies concerning the "Contee Road" interchange in the mid-1990s. The purposes of the interchange were:

- to serve Konterra, the proposed upscale mall (apparently now abandoned),
- to serve the Sweitzer Lane business park, and
- to provide traffic relief to Laurel by adding another route onto I-95.

Related to this is the planned extension of Kenilworth Avenue up to Contee Road along the Virginia Manor Road corridor, the realignment and expansion of Contee Road from Route 1 all the way to Gunpowder Road, and the expansion of I-95 to resemble I-270 near Rockville. The earlier studies resulted in the Federal Highway Administration approving access for the interchange on I-95.

Now, the Konterra property owner and the State are moving forward with a study of the impacts of this project. Thus, it is picking up pace and residents are sure to hear more about it in the future. Tom Dernoga has volunteered to continue monitoring the study and keep the WLCA involved in the process. ❖

PRINCE GEORGE'S COUNTY GENERAL PLAN UPDATE

The Prince George's County Planning Board is getting public input for the new General Plan, the framework for development in the next 20-30 years. The proposed plan is based on recommendations of Commission 2000, where your representatives (Tom Dernoga and Barbara Sollner-Webb) worked hard to attain a "rural" designation for the Northern portion of our community and retain a "developing" (not "developed") designation for the area south of our community, Beltsville. The latter is crucial to maintain traffic flow on Old Gunpowder Road.

A "developed" designation would permit development that generates substantial regular traffic jams (LOS E) at the southern end of this road (the Powder Mill/Old Gunpowder intersection), while the "developing" designation would supposedly only permit development that maintains flowing traffic (LOS D) at this intersection. The development forces will be pushing hard to change these designations, especially Beltsville, to "developed."

Public comments will be accepted until May 15. Please make sure that you are one of the voices they hear by sending your comments to: Elizabeth M. Hewlett, Chairman, Prince George's County Planning Board, County Administration Building, 14741 Governor Oden Bowie Drive, Upper Marlboro, MD 20772. ❖

TROJAN HORSE BILL PUT DOWN

Our thanks to Sen. Arthur Dorman and Delegates Paulene Menes, Brian Moe and Barbara Frush for helping stop an audacious last second surprise in Annapolis. Just before the Session ended, some developers and their lobbyists took an innocuous bill (HB 852) which would delegate authority to Municipalities to review Landscape Plans, and stripped ALL of the provisions and replaced them with language to allow developers to buy adequate public facility compliance (this trick is often referred to as a "Trojan Horse" bill). If the idea had merit, why didn't the developers put it before the public when there were hearings on Prince George's County Bills?

Sen. Dorman voted against the maneuver in the Prince George's Senate delegation but lost 4-3. When HB 852 made it back to the House on the last day of Session, our delegates opposed it. And, even better, it never got to a vote because the Trojan Horse aspect violated House parliamentary rules. Thanks to the House Parliamentarian, our Delegate, Paulene Menes! ❖

COMMUNITY ISSUES

ROUTES 198 AND 28 “UPGRADE” — DE FACTO ICC ?

Last winter you heard about proposed “upgrading” (read “freeway-izing”) Routes 198 and 28, making a direct connection from Laurel to Gaithersburg areas. This roadway would closely parallel the InterCounty Connector (ICC, northern alternative) in location, induced sprawl, and likely immense traffic volume. The route bisects West Laurel and almost assuredly would bring added traffic, noise and pollution to our community. WLCA’s two previous polls on the ICC had high response and an overwhelming 93% and 95% “don’t build it” sentiment.

Sean Burnett, State Highway Administration’s (SHA’s) Project Manager for the Routes 198/28 “upgrade”, spoke at WLCA’s winter meeting, telling us that project was in its infancy and a Study Group was being formed. Councilman Mike Maloney was able to nominate two individuals, so Barbara Sollner-Webb (vice president of WLCA) and Evelyn Wasseley (past president of Gunpowder Civic Association) will be members. Stuart Rochester, who also spoke at the winter 2001 WLCA meeting, regarding the documented need for constant vigilance on SHA efforts, will be a Montgomery County representative; however, pro-ICC forces will assuredly comprise the vast majority of the Study Group. The first meeting of this group will occur after this newsletter goes to press. An update will be provided at the general meeting. Concerned residents can contact area reps or Barbara Sollner-Webb with questions and comments. ❖

PRINCE GEORGE’S LEASH LAW FOR CATS AND DOGS

Readers may recall a big flap in the editorial section of the Laurel Leader a few years ago when neighbors debated a citation where a cat, left running loose, was shot and killed by someone with a BB gun. Perhaps some have forgotten or never learned the lesson from that experience. While it was unfortunate that the cat was killed, this incident should have made us aware that the law prohibits cats and dogs from running loose. Now we have a law that makes shooting an animal in this way a felony!

The WLCA Board reminds all Prince George’s County residents that cats and dogs are required to be on a leash and accompanied by the owner when the pet is not on the owner’s property. When pets are found loose, they are subject to collection by animal control. Some people feel that this is unfair. Those of this opinion need to take this issue up with the legislators and avoid debate, conflict, or retribution with neighbors.

Here are a few good reasons why the leash laws make sense: (1) your pet’s safety is at risk when you allow it to run loose — it could be hit by a car or worse; (2) a stray pet can set off a motion detector, bringing police to a neighbor’s home for a false alarm and thereby hindering them in responding to actual crimes (not to mention that after three calls for service from the police, it will cost that homeowner \$50); and (3) your neighbors may not appreciate your taking liberties with the law, thereby resulting in conflicts among neighbors. This last reason is noteworthy. Please respect the laws and your neighbors. v

PEDESTRIANS TAKE RISKS ON RURAL ROADS

Riding Stable Road has seen a lot of development in recent times. More homes and a large church have been added while more and more cars use Riding Stable and Brooklyn Bridge as a popular cut through to Laurel.

Pedestrians continue to use this road for walking and riding. As more pedestrians are using this road — combined with a greater number of cars — the chance of a serious accident increases.

The WLCA Board recommends that everyone use extreme caution when using this road. The road is narrow and the speed limit is often abused. Whether you are driving or walking, please be careful and be aware of those around you. ❖

COMMUNITY ISSUES

CAN “UPSCALE” CONFLICT WITH “AFFORDABLE ENJOYMENT” ?

Remember Kingdon Gould’s proposal to combine his land just south of our community (west of Old Gunpowder Road) with the abutting Gunpowder Golf Course currently administered by Maryland National Capital Park and Planning, creating a golf course community with a refurbished course? This envisioned Gunpowder Development, between Route 198 and Fairland Regional Park, includes 600-plus new Prince George’s and Montgomery County homes accessing from Old Gunpowder Road, south of the Bond Mill Road/Route 198 intersection.

Ryland Homes/Artery Corporation has submitted a plan to Maryland National Capital Park and Planning Commission. It includes a land swap, which involves reconstruction of the current Gunpowder Golf Course into an “upscale, championship” course.

The present Gunpowder Golf Course is not vying for “championship” category. But many users say they want a great day without breaking the bank and feel it is just not what they want. The 18-hole course is frequented by large numbers of citizens and taxpayers who are able to take advantage of the facility because of its modest rate structure (daily fees: \$9 weekdays; \$14 weekends; April free for youths). These users include senior and youth golfers on fixed incomes. They feel it is a rare facility and should be treasured.

Most championship golf courses like the developers envision have considerably higher fees. Courses can charge upwards of \$50 per day. Most require golf cart rentals, changing the atmosphere and exercise value.

We will need to ask whether Maryland National Capital Park and Planning is looking out for the interests of average county residents with this contemplated land swap. What will citizens do? Who thought their taxes had paid for the course and can’t or don’t want to afford “championship”?

Note that the Cross Creek Golf Course Community is a stone’s throw further south (between Fairland Regional Park and Briggs Chaney Road) and is well underway. This course will be a championship-

level golf course. Therefore, consideration should be given to the need of having two championship golf courses in the immediate vicinity or one championship golf course and one adequate but less expensive one.

If you are directly affected or you feel that a more general principle is involved, it is important to make your views known. Send a short letter to Elizabeth M. Hewlett, Chairman, Prince George’s County Planning Board, with a copy to Councilman Mike Maloney.

Elizabeth M. Hewlett, Chairman, Prince George’s County Planning Board, County Administration Building, 14741 Governor Oden Bowie Drive, Upper Marlboro, MD 20772 or fax: 301-952-5074

Councilman Walter (Mike) Maloney, County Administration Building, 14741 Governor Oden Bowie Drive, Upper Marlboro, MD 20772, or fax 301-952-4801 or e-mail wmaloney@co.pg.md.us. ❖



Continued from page 1

Come to the May general meeting and hear from the developers and others. This is a chance for you to hear the details and provide planners with your input - PRO or CON. The WLCA has not taken a position on this plan yet, but there is concern about the lack of citizen input or involvement. We’d like to hear from you and get your opinion on this project. In addition to the golf course issue, we’ll have local police on hand to talk with you about neighbor crime and we’ll hold election for 2001-2002 officers and board members. This is a critical meeting where your help and input are needed - the results will have an impact on our operations throughout the next two years. The WLCA board looks forward to seeing you May 17, 7:30 p.m., at the West Laurel Community building at the intersection of Bond Mill and Brooklyn Bridge Roads. ❖

ENVIRONMENTAL ISSUES

WEST NILE IS NOW A FACT OF LIFE

Last May, the HOTLINE brought you an article about the West Nile Virus and its potential impact on West Laurel. We have brought much of that information back to you in this issue. You may recall that there were many infected animals found in the region last year. Experts expect to see more of the same this year. You may also recall that last year was one of the worse mosquito seasons on record. **YOU CAN DO A LOT TO FIGHT THE MOSQUITO!**

Why should residents of West Laurel care about this virus? Because the elements of risk are present in our community. The WLCA Board met with a known expert on the subject, and considers the West Nile Virus a “**possible**” health threat to our community. This article is not intended to cause alarm, but rather to inform the community of facts surrounding this issue, including what can be — and what is being — done.

FACTS

- **Infected birds maintain the virus.** Certain types of mosquitoes can become infected with the virus when they feed on infected birds. Infected mosquitoes then transmit the virus to other birds and, occasionally, to humans. At least one type of mosquito that is capable of transmitting the virus is present in West Laurel. Humans do not directly transmit the virus to each other.
- **Birds can spread the virus over large areas as they migrate.** Last year, a dead crow in Baltimore City was found to have the West Nile Virus. Although no other infected birds have been found in Maryland since last year, mosquitoes could have contracted the virus from this or other birds in our area.
- **The virus can be deadly to horses and humans.** Our children and seniors are at greatest risk. Fatality rates range from 3 to 15 percent among those who become seriously ill with the disease and are highest among the elderly. Many infections are mild and go undiagnosed.

- **Some infected mosquitoes survived the winter.** This winter health officials in New York have found hibernating mosquitoes that are infected with the virus. This is cause for concern to health officials along the eastern seaboard, and they are watching the situation carefully.

- **The summer months will soon be upon us.** Mosquitoes will be coming out in numbers. We need to understand and prepare now rather than later.

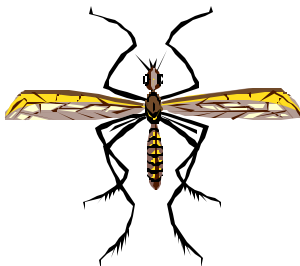
- **The West Nile Virus is new to the Western Hemisphere.** Last year was the first time the virus was found in the Western Hemisphere. Public knowledge regarding this virus is low. Health experts are concerned that the virus will spread over large areas over time. The virus is well established in Africa, West Asia and the Middle East.

COMMON QUESTIONS AND ANSWERS

- **How does the virus cause death in a human?** When the virus multiplies in a person’s bloodstream and crosses the blood-brain barrier to reach the brain, it may result in inflammation of brain tissue and interfere with central nervous system functioning. This condition is called encephalitis – hence, the disease is called West Nile Encephalitis.
- **What are the symptoms of the virus?** A person may initially experience flu-like symptoms (*e.g.*, ache, fever, chills, etc). In severe cases, which are life-threatening, symptoms can include disorientation, high fever, coma, tremors, convulsions, muscle weakness and paralysis. The incubation period is 5-15 days.
- **Is there a vaccine for the West Nile virus?** No.
- **Can people develop natural immunity to the virus?** Immunity to some types of viral encephalitis develops after infection.
- **What is the treatment for the virus?** There is no specific treatment. If you feel ill, seek medical treatment immediately. In severe cases of infection, hospitalization with intravenous fluids, airway management, etc. is required.

ENVIRONMENTAL ISSUES

- **What is the treatment for the virus?** There is no specific treatment. If you feel ill, seek medical treatment immediately. In severe cases of infection, hospitalization with intravenous fluids, airway management, etc. is required.
- **When is mosquito season?** In our area, the season is early summer to early fall.
- **What defense can one take against mosquitoes?** There is no absolute defense against mosquito attack. The best defense is to stay indoors at dawn and dusk and to ensure that your house is secure and free from open passage to the outside that would allow mosquitoes to enter your home. If you go out, wear long-sleeve shirts and pants, avoid wearing dark colors and use insect repellent (ages 3 and older only). To help reduce mosquito habitat and lower your risk and remove standing in containers, tarps, old tires, tire swings, etc. Poorly draining gutters should be repaired and water in pet dishes should be changed daily. Water in birdbaths should be changed several times a week.
- **What do I do if I find a dead bird?** Don't touch the dead bird; if the cause of death is not evident, **call health officials at 1-888-584-3110**, especially if you find a dead crow.
- **Are crows the only birds which carry/die from the virus?** Domestic geese have died from the virus.
- **What are the State and County doing to detect the virus in our area?** Art Thacher (West Laurel resident and Health Officer for Prince George's County) said the virus is something a community should be aware of and prepared for; however, it's too early to tell at this stage if there will be problems in our area. State officials will monitor for the virus by testing dead birds, catching/testing mosquitoes, and using a statewide surveillance of sentinel chickens to see if they show signs of infection.



- **What can the WLCA to prepare/protect the community?** In years past, the WLCA has sprayed for gypsy moths to save the community's oak trees; much of the WLCA budget reserve is kept to respond to that threat should it occur again in the future. If mosquitoes become a problem due to the virus, this reserve could be tapped to spray the community. The cost of spraying is split between the County (25%), the State (50%), and the community (25%). For West Laurel, the community's share of the cost could range from \$250 to \$500 per season, an average of 20¢ per household. However, only 25 percent of West Laurel residents pay dues to support the WLCA. In actuality, dues-paying households would subsidize the rest of the community and the actual cost would be nearly four times higher (75¢ per dues-paying home).
- **Where can I find more information on the West Nile Virus?** The Center for Disease Control and Prevention (CDC) has a website with a plethora of information on this subject. You may access it at <http://www.cdc.gov/ncidod/dvbid/arbtor/WestNileQA.htm> ❖

WLCA ANNUAL CLEAN-UP

The West Laurel Civic Association Annual Environmental Clean-up will be Saturday, May 26th, from 10 AM - Noon. Volunteers will meet at the West Laurel Community Building. Questions should be directed to Environmental Committee Chair, **Justin W. Chappell, at 301.802.7720 or Wiz@erols.com.**

It is important to know and report any signs of Gypsy Moths or West Nile Virus. If you see any indication that Gypsy Moths are in your vicinity, report your findings to **Justin W. Chappell, at 301.802.7720 or Wiz@erols.com.** Please follow West Laurel's community newspapers for further announcements on reporting West Nile Virus. Let's Work Together.

Information on Gypsy Moths can be found at www.fs.fed.us/ne/morgantown/4557/gmoth, with information on West Nile Virus at www.cdc.gov/ncidod/dvbid/westnile/index.htm The WLCA's Environmental Page can be found at www.doore.net/westlaurel/environment.htm. ❖

BOARD MEMBER ELECTIONS

ELECTION OF WLCA BOARD MEMBERS 2001-2002

The officers and reps listed in **bold print** will be voted on during the Spring General Meeting.

Officers

President	Justin Chappell
1st Vice President	Tom Dernoga
2nd Vice President	Barbara Sollner-Webb
Rec Secretary	Mary Lehman
Treasurer	Laurice Crawford

Area I Reps

Rep (2 Year)	Robert & Sophia Cox
Rep (1 Year)	Jurgen von Bredlow
Alternate	Allan Mulligan

Area II Reps

Rep (2 Year)	Richard Weiblinger
Rep (1 Year)	Bill Ferguson
Alternate	John Dollen

Area III Reps

Rep (2 Year)	Gary Holt
Rep (1 Year)	Howard Rosenberg
Alternate	Ron Holmberg

Area IV Reps

Rep (2 Year)	Lucy Grimes
Rep (1 Year)	Irene D'Amato
Alternate	Barney Walsh

Area V Reps

Rep (2 Year)	Vacant
Rep (1 Year)	Bob Kline
Alternate	Carol Bounds

Committee Chairmen

Zoning	Tom Dernoga
ICC	Barbara Sollner-Webb
Environmental	Justin Chappell
Hotline	Ron Holmberg

WLCA is still looking for nominations to fill vacancies. If you are interested, please contact **Laurice Crawford** at (301) 490-8684. Nominations will be accepted from the floor at the May 17th General Meeting. ❖

WEST LAUREL HOME PAGE

The West Laurel Home page on the World Wide Web is being continually updated and includes many new features. The calendar page has dates and times for most West Laurel events. If you have an event to include on the calendar page, please contact **Ron Holmberg** at 301/604-7598 or holmberg@erols.com.

The Website also contains a multitude of hotlinks to government, county, and community pages. The site has links to most of the Montgomery and Prince George's County websites. West Laurel Swim Club and the West Laurel Recreation Council have links or pages on the site. We invite you to take a look at the pages — we welcome your feedback! The URL is <http://www.webtrek.com/md/westlaurel/index.html>. ❖

COMMUNITY NEWS RESOURCES

West Laurel is fortunate to have resources to provide you with timely updates on community happenings. As you may know, Ms. Chris Folks has a West Laurel column in *The Laurel Leader*. Chris encourages anyone in West Laurel to contact her via email or telephone about neighborhood happenings (e.g., informal announcements of weddings, engagements, births, birthdays, special anniversaries, graduations, special awards, etc.). Share the good news with your neighbors! Contact **Chris Folks** at CBFolksWL@aol.com or 301-490-0797.

Furthermore, West Laurel has a community website on the Internet (<http://www.webtrek.com/westlaurel/index.html>). There is a community calendar as well as information on many groups and organizations relevant to West Laurel residents. If you would like to post information at this site, please contact **Ron Holmberg** at 301-604-7598 or email him at holmberg@erols.com. ❖

COMMUNITY GROUPS

LAUREL FOURTH OF JULY COMMITTEE

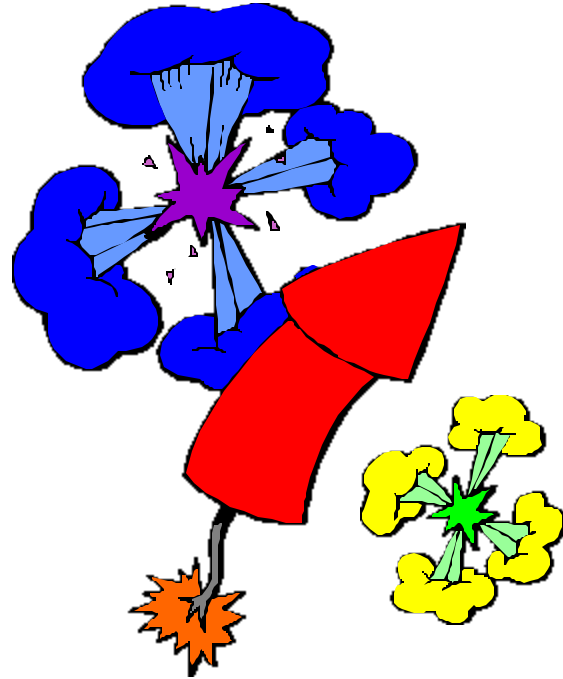
Laurel Fourth of July Committee (LFJC) — The Winter Edition of the Hotline provided a reminder about the meaning of Independence Day, a little history about the current Committee and its activities, and made an appeal for volunteers. Nothing has changed except that our Golf Tournament on Monday, May 7 is fast approaching, and the LFJC anticipates this year's event will be as much fun and exciting as last year's.

This year's theme for the Independence Day Celebration is "*America's Future*" and members from Laurel, Savage and Beltsville's Boys & Girls Clubs will serve as the Grand Marshals. Our youth are very special people and this country's most precious commodity. So often there are accomplishments and acts of kindness that go without recognition, and although we cannot recognize each person as such, we can put the spotlight on them for a day. With this in mind, the Committee would truly welcome all youth participating in the parade. How 'bout it West Laurel — why not enter "our youth" as "*America's Future*"?

Volunteers are needed on the day of the Independence Day Celebration, which is on July 7 this year. Additional volunteers are needed to support the:

- Parade line up and monitoring the barricades at the line-up area on Montgomery Street between 9:30 and 12:00;
- Sales of Multi-Prize raffle tickets on the field at Gude Park; and
- Soda and hot dog sales at the Committee's booth between the hours of 12:00 noon and 8:30 p.m.

As noted in the Winter Hotline — **THIS IS A GREAT WAY FOR SCHOOL KIDS TO EARN COMMUNITY CREDITS.** If you are interested in becoming a volunteer, please call **Carol Bounds, Chairperson, at (301) 725-6012.** The LFJC and the community need your support and donations to help this Celebration continue in the years to come. ❖



BOARD DISCUSSIONS TOPICS SINCE FEBRUARY 2001

Errigo Property rezoning request; Montgomery County zoning regulations, violations and enforcement; October general meeting agenda; WLCA budget; sewage treatment proposal in the Glenelg area; membership drive; proposal to open WSSC trails to hikers; revote on Errigo rezoning; highlights of October general meeting; WLCA's website development; land use violations along the Rt.198/Rt.29 corridor; West Nile virus; request for WLCA mailing list (denied); Tubby's septic system problems; newsletter planning; crime statistics; Van Dusen interchange; ICC; state legislation highlights in 2001; I-95 summit; new neighborhood watch liaison needed; impact of home-business operating in West Laurel; vandalism at West Laurel community center; ICC hearing at Magruder High School; proposed underpass at Rte. 29/198; annual community cleanup; new equipment at Neighborhood Park #2; WLCA board and officer vacancies; October elections and redistricting; May general meeting topics; series of B&E incidents/ attempts; city of Laurel annexation plans; WLCA support for Laurel 4th of July Committee; parking and zoning violations in PG County. ❖

USEFUL NUMBERS

Bold numbers are Montgomery County

EMERGENCY NUMBERS

- Emergency 911
- Police (Laurel/Beltsville) (301)937-0910
..... **(301) 847-0112**
- Fire Department (301)776-3600
..... **(301) 384-4320**
- Laurel Rescue Squad (301)725-3345
- Burtonsville Rescue Squad **(301) 384-4320**
- WSSC (301)206-8000
- Poison Control Center 1-(800)492-2414

- Information & Referral (301) 350-9700
..... **(240) 777-1000**
- Animal Control (301)499-8300
..... **(301) 279-1823**
- Fairland Rec Center (301)953-0030
- Fairland Ice Rink (301)953-0100
- Fairland Aquatic Center (301)206-2359
- West Laurel Swim Club (301)725-2034
- Recycling (301)952-7630
..... **(240) 777-6410**
- School Bus Lot (our area)..... (301)497-3665
- Litter Pickup, Mowing, Street
Trees, Leaf, Snow Removal .. (301)499-8520
..... **(240) 776-7623**
- Bulky Trash Pickup (301)952-7600
..... **(240) 777-6410**
- Zoning Enforcement (301)883-6130
..... **(240) 777-6049**
- Housing Enforcement (301)883-6100
..... **(240) 777-6240**
- Deerfield Run Community Center(301)953-7882

HOTLINE CONTRIBUTORS
 Many thanks to those who contributed to this issue of *HOTLINE*: Gordon Anderson, Carol Bounds, Justin Chappell, Laurice Crawford, Tom Dernoga, John & Cindy Dollen, Ron Holmberg, Mary Lehman, and Barbara Sollner-Webb. ❖

THE WEST LAUREL SWIM CLUB

Join the West Laurel Swim Club on Brooklyn Bridge Road! Notice the clean, clear water? It's not too late to join the West Laurel Swim Club before the pool season begins! Anyone can join! Call **Betty Mannas (301-725-2034)** for more information. Or check out the web page at <http://www.webtrek.com/md/westlaurel/wlsc.htm>. The swim team will begin in May and is only open to West Laurel swim club members. More information on the West Laurel Web site. Please note: The West Laurel Swim Club is not affiliated with either the WLRC or WLCA. ❖

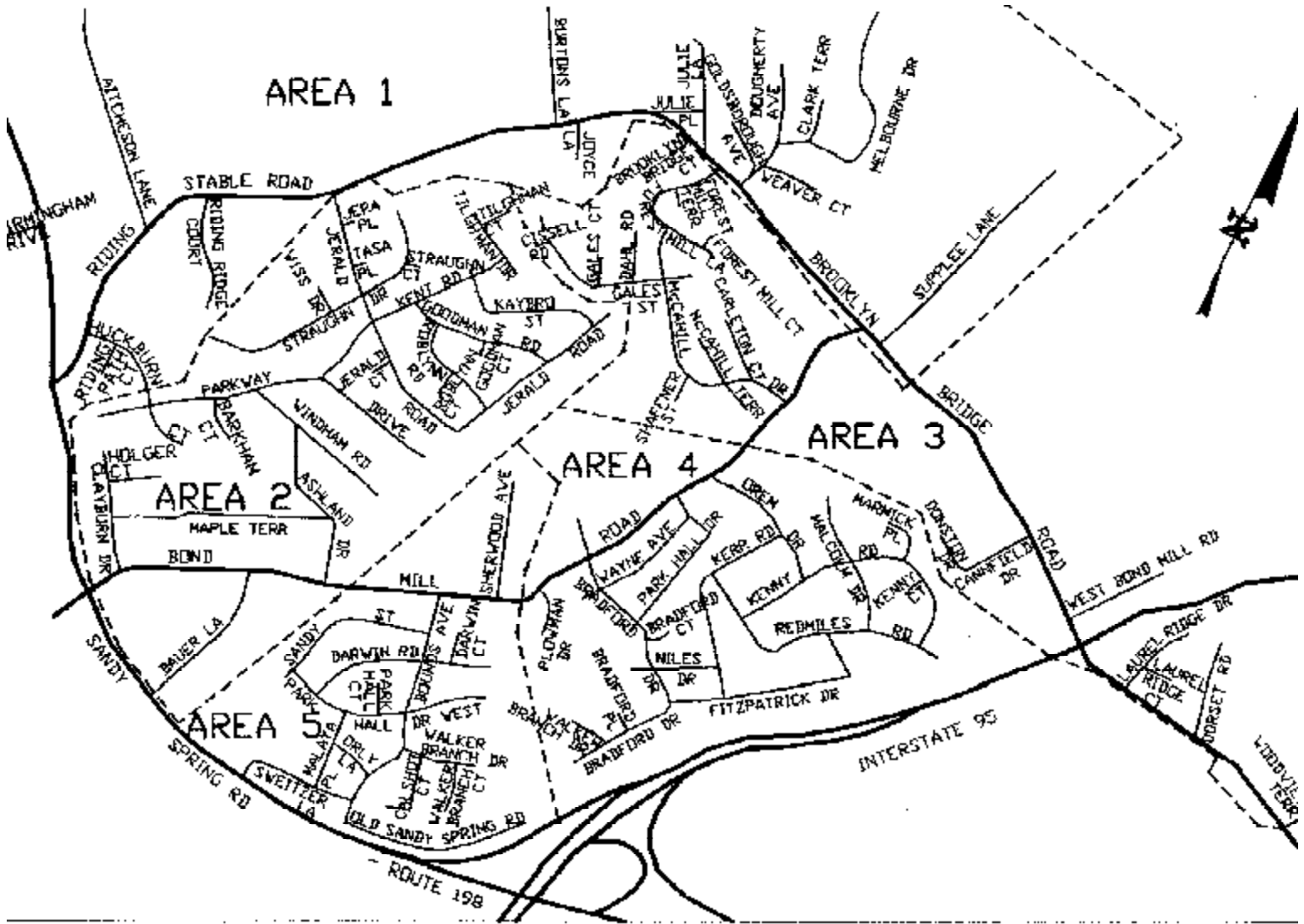


(For reservations or information regarding events at the West Laurel Community Center, ask for Deedee Sisson)

County Councilman's Office (301)952-3887
 Councilman Mike Maloney
 Andy Eppleman (Assistant)

County Councilperson's Office (240) 777-7968
Councilperson Marilyn Praisner

(Call this office to request action on local and/or county-wide problems; to get information; or to pass on a compliment) ❖



The Newsletter of the West Laurel Civic Association

HOTLINE — Spring 2001

PRST STD
Postage Paid
Permit #3505
Laurel, MD 20725

West Laurel Civic Association
P.O. Box 387
Laurel, MD 20725